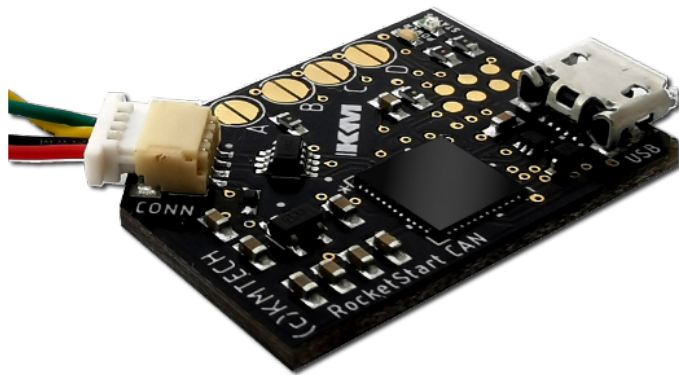
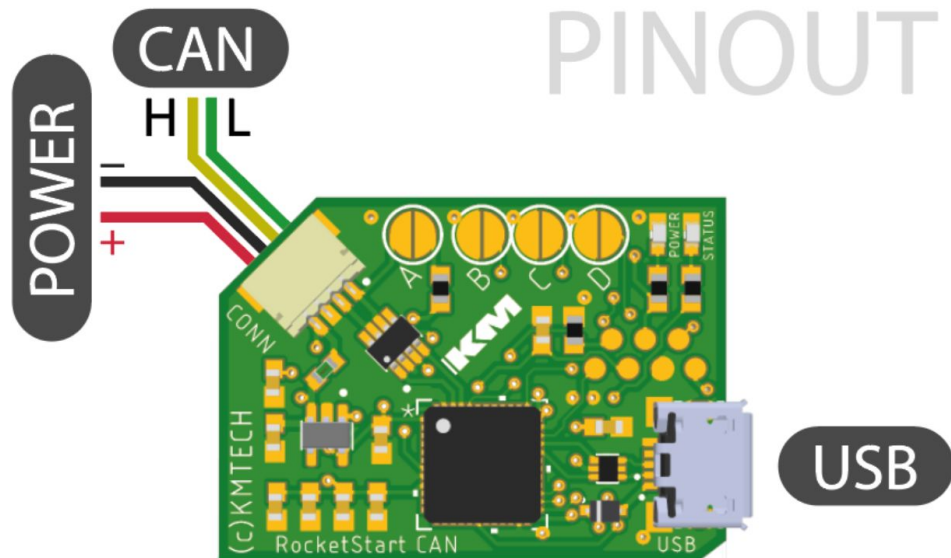


# Quick Start

## RocketStart RSCAN



## Overview



**Power** : between 4V and 17V. Protected against reverse polarity.

**Power Consumption** : 18mA (idle) 28mA (running) @12V.

**CAN ISO11898 High-Speed** : ESD safe until 2kV.

**USB 2.0** : micro-usb socket, ESD safe until 8kV.

## JUMPERS : A, B, C, D

(A) jumper let you activate embedded can bus termination 120ohm resistor. This resistor is necessary to check on bench or if ECM is the only node in can bus (eg: race car). Others jumpers are for future development and may be disappear in next versions.

# LEDS

RocketStart RSCAN has 2 LEDS :

- Blue **POWER** led : light on as device is powered
- Green **STATUS** led : can give you some more information about current status
  - **10 blinks per second** : emulator is actually checking for correct CAN bus speed
  - **5 blinks per second** : emulator is actually trying to sync with ECM or ISK/PIN is not the same as in ECM
  - **1 blink per second** : emulator is synchronised and immobilizer status is unlocked

# PREPARE FOR CONFIG

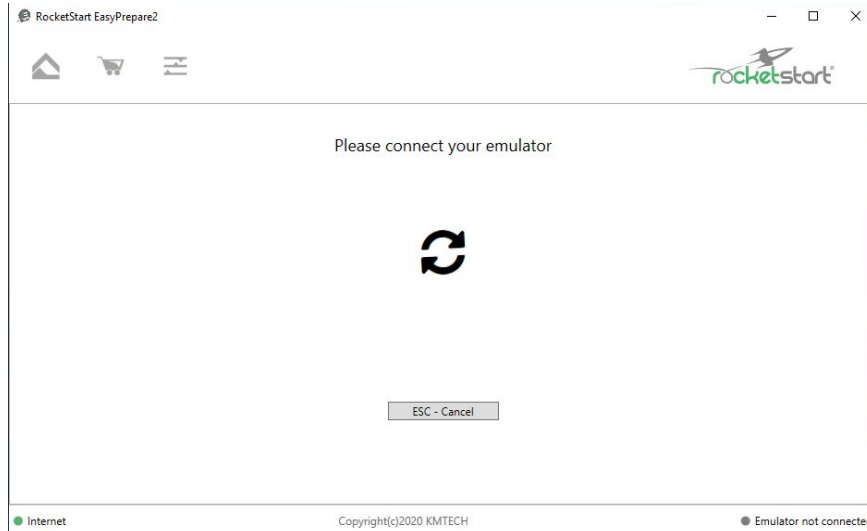
In order to prepare emulator/ecm please download our free utility RocketStart EasyPrepare2 at <https://www.rocketstart.io/>

This installation package will also install USB driver for communication.

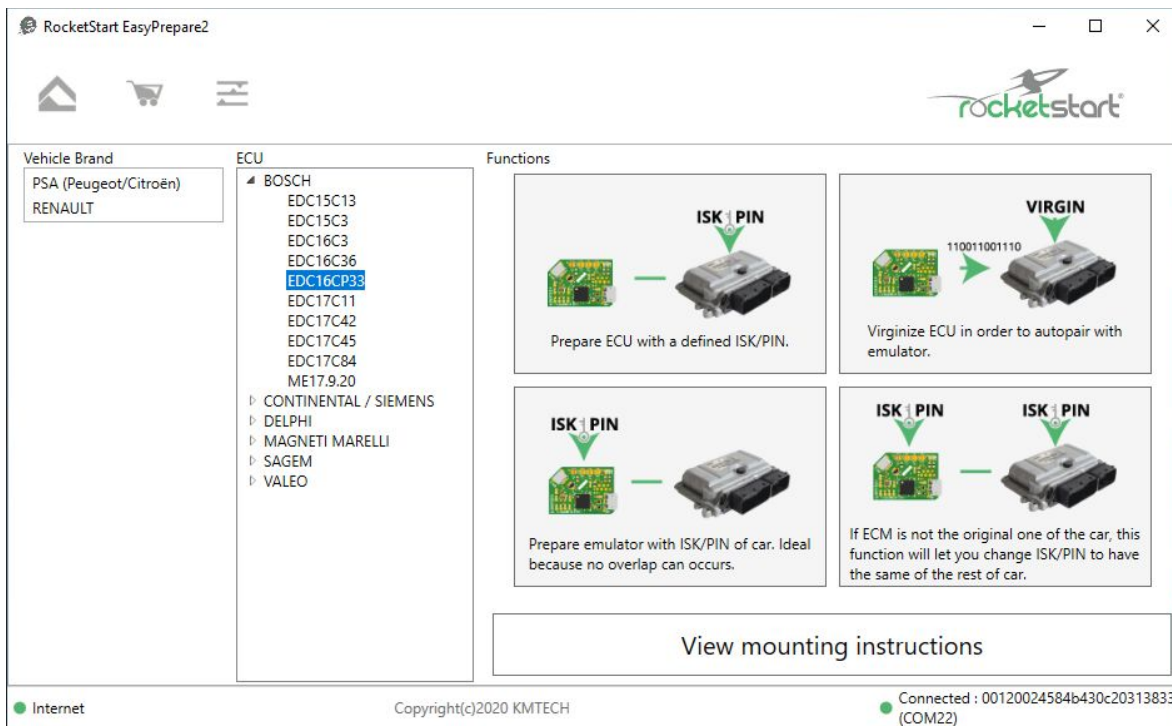


Start window, choose RSCAN (right side option).

If emulator is not correctly plugged or if driver is not installed, you will see this window :



Now your emulator is correctly plugged and detected, this window will popup and let you choose ECM on which you want to install it :



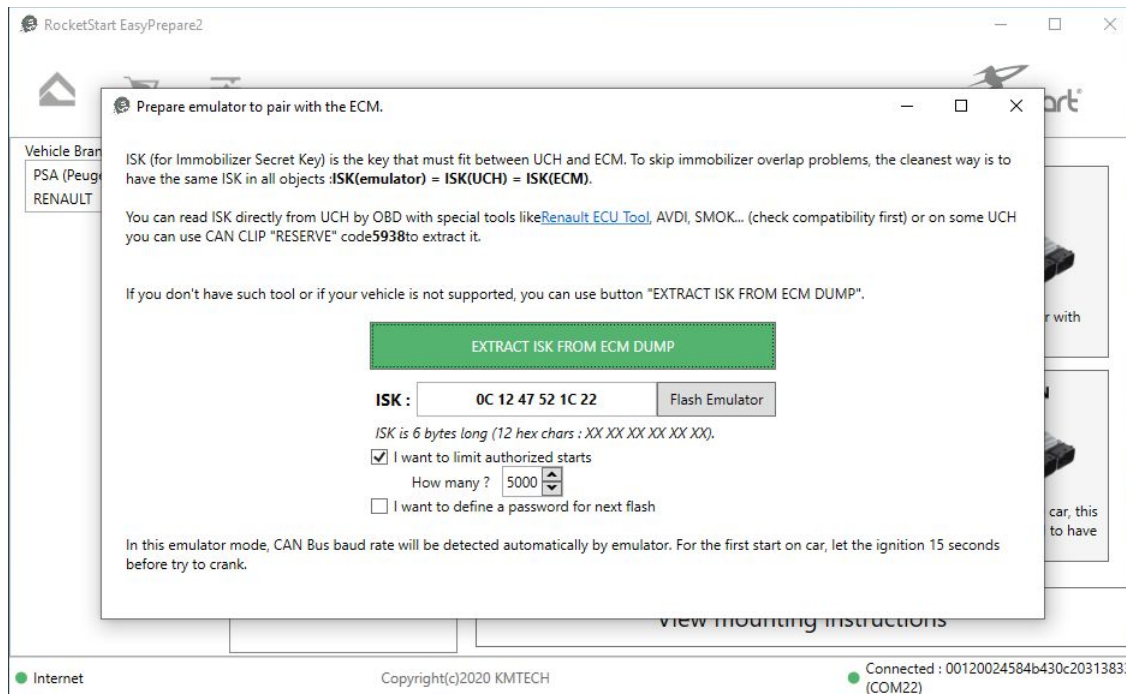
Your car make and ecm model chosen, you will see available options on the right side of the window.

View mounting instructions

Click on this button to view wiring scheme with your ECM.

## Emulator Setup

Emulator function chosen, emulator setup wizard window will show :



Depending on the function previously selected, the green button will help you to prepare dump to be virgin or to extract ISK/PIN from memory dump of ECM.

In this window, you will be able to activate "start limitation" function too and password protect your emulator again future flashing.

Now, click on "Flash Emulator" to burn parameters into emulator. The "Flash OK" message box will popup to inform that your settings are correctly saved in emulator and that you can now put in car !